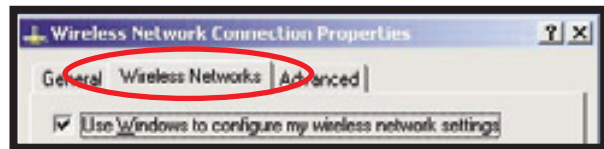
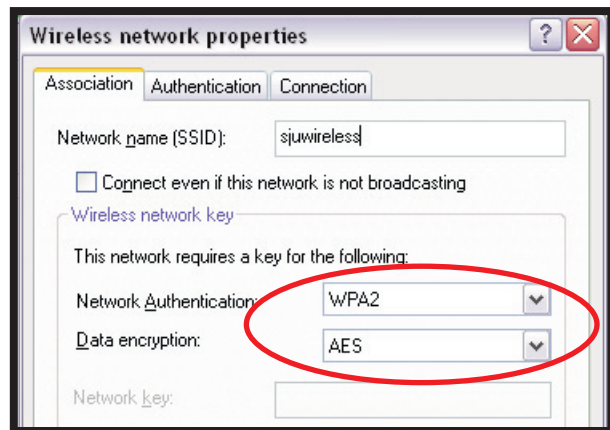


For Windows XP:

1. Click on START
2. Go to the CONTROL PANEL
3. Double-click on NETWORK CONNECTIONS
4. Right-click on WIRELESS NETWORK CONNECTION and select ENABLE
5. Right-click WIRELESS NETWORK CONNECTION again and select PROPERTIES
6. Click on the Wireless Networks tab

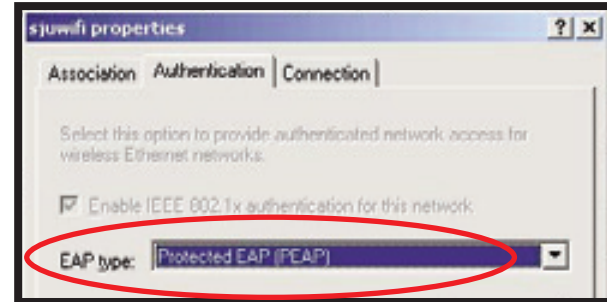


7. Click ADD and enter sjuwireless for Network name (SSID)
8. Select the appropriate information in the following fields:
 - Network Authentication: WPA2
 - Data Encryption: AES

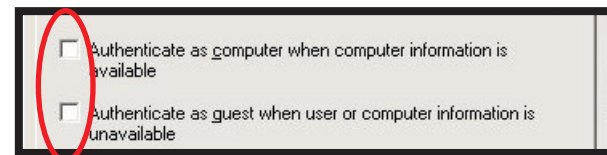


For Windows XP continued:

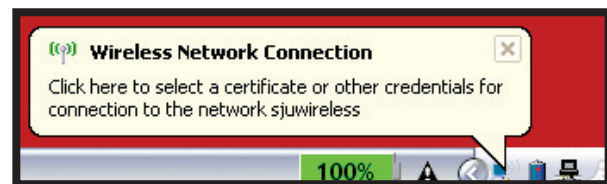
9. Click the AUTHENTICATION tab
10. Set the EAP type to Protected EAP (PEAP)



11. Uncheck BOTH "Authenticate..." boxes



12. Click the Properties button
13. Uncheck "Validate Server Certificate"
14. Set the Authentication Method to SECURED PASSWORD (EAP-MSCHAP v2)
15. Click the Configure button
16. Uncheck "Automatically..."
17. Click OK three times to close out of all open dialogue boxes
18. Click OK to close the "Wireless Network Connection Properties" window
19. In a few moments, a bubble should appear in the lower right corner of the screen



20. Click on it and enter your SJU username and password. Leave Domain field blank
21. Click OK

FOR ALL OPERATING SYSTEMS:

The University has licensed Symantec Antivirus software for the entire campus, including student-owned systems. The student version of Symantec Antivirus is available for download at: <https://it.sju.edu/downloads/symantec>

This site is restricted to SJU members only, so you will need to login using your standard username and password you use for other SJU applications (such as MySJU).

For additional computer help, visit:

THE STUDENT TECHNOLOGY CENTER
Science Center 129
610-660-3070

E-mail us at: stc@sju.edu
Chat with us online @ <http://it.sju.edu/>

THE STUDENT TECHNOLOGY CENTER
Science Center 129
610-660-3070
Monday –Thursday: 8am-11pm
Friday: 8am-5pm
Saturday: 10am-5pm
Sunday: 10am-11pm

Some quick tips from

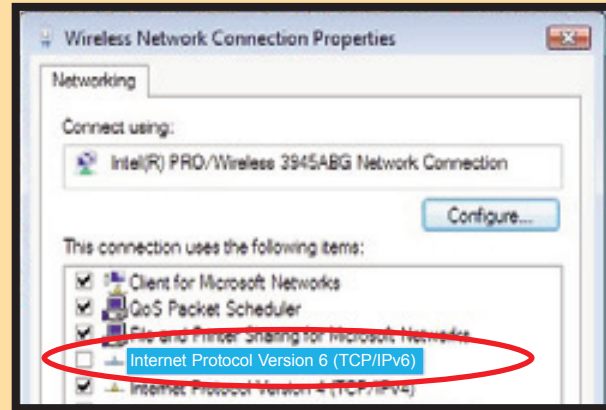
THE STUDENT TECHNOLOGY CENTER

*how...
How to set up
your wireless...?*

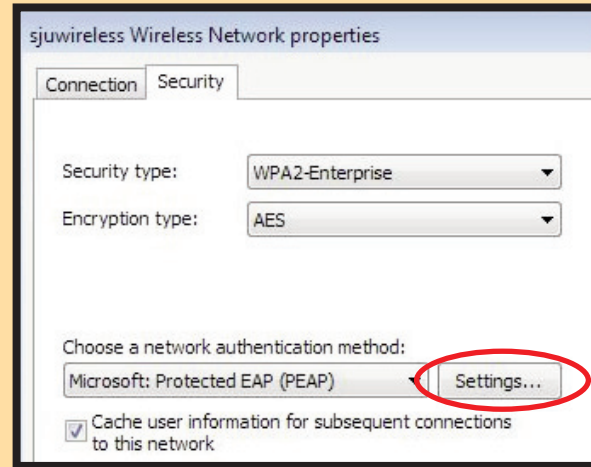
— Setting up your computer's wireless —

For Windows Vista:

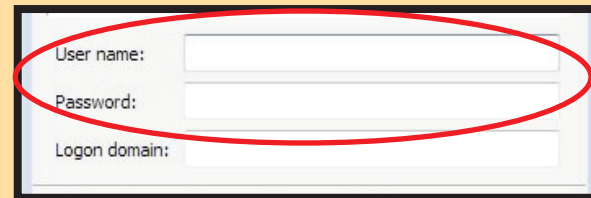
1. Click the START button
2. Go to the CONTROL PANEL
3. Click on "View network status and task"
4. Click on "Manage Network Connections" in the column on the left
5. Right-click on the Wireless connection and select "Properties" from the drop-down menu
6. Uncheck "Internet Protocol Version 6"



7. Click OK, and return to "Network and Sharing Center"
8. Click on "Set up a connection or network"
9. Double-click on "Manually connect to a wireless network"
10. A dialogue box will appear, enter the following credentials:
 Network name – sjuwireless;
 Security Type – WPA2 enterprise;
 Encryption type – AES
 Click "Next" when finished. Then, click on "Change Connection Settings"
11. The "sjuwireless Wireless Network Properties" box will appear. Select the SECURITY tab



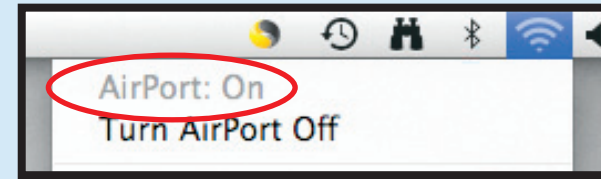
12. Click the "Settings" button
13. Uncheck the box for "Validate Server Certificate"
14. Click "Configure"
15. Uncheck "Automatically use my Windows password..."
16. Click OK in all your dialogue windows.
17. Click on "Enter/Select Additional Logon Information"



18. Enter your SJU username and password in the appropriate fields. Be sure to leave the Domain field blank
 19. Click OK
- If you are still unable to connect to sjuwifi after following these steps, check to see if your computer is running Norton Internet Security. If so, you will need to uninstall this application in order to be able to connect to the wireless. To uninstall, go to the Control Panel and click on "Programs and Features." Scroll down the list of programs and find Norton Internet Security. Follow the steps in the dialogue boxes to uninstall. RESTART your computer.

For Mac Users:

(for OS 10.3 and later)



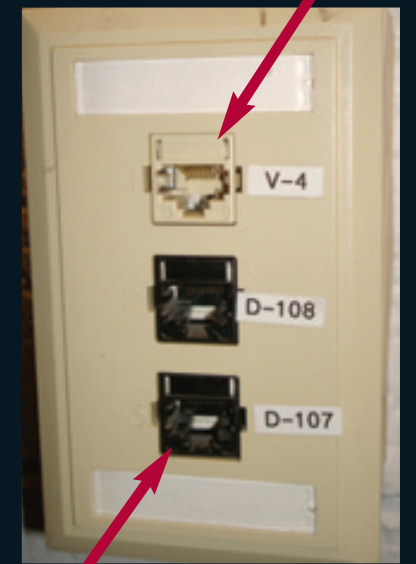
1. Turn AirPort ON (if not on already)
2. Click the AirPort icon and click on "sjuwireless"
3. You will be prompted for your SJU username and password
4. Enter your username and password and click on "Add to Keychain"
5. Click OK
6. An "802.1x Authentication" dialogue box will appear. Click CONTINUE
7. After a few moments, you should be connected to sjuwireless

If you are using the Leopard operating system (10.4 or later), you will need to make one additional change:

- a. Click on the airport icon, located at the top right of the screen and select open network preferences
- b. Click advanced
- c. Click on tcp/ip tab
- d. Next to "configure ipv6", select "off" from the drop down menu
- e. Click OK
- f. In the network box, click "apply"
- g. You may now close out of the network box

How do I know which jack is for the phone and which is for the Ethernet cord?

"V" is for VOICE.
Plug in your phone cord here.



"D" is for DATA.
Plug in your Ethernet cord here.

For additional computer help, visit:

THE STUDENT TECHNOLOGY CENTER
 Science Center 129
 610-660-3070
 E-mail us at: stc@sju.edu